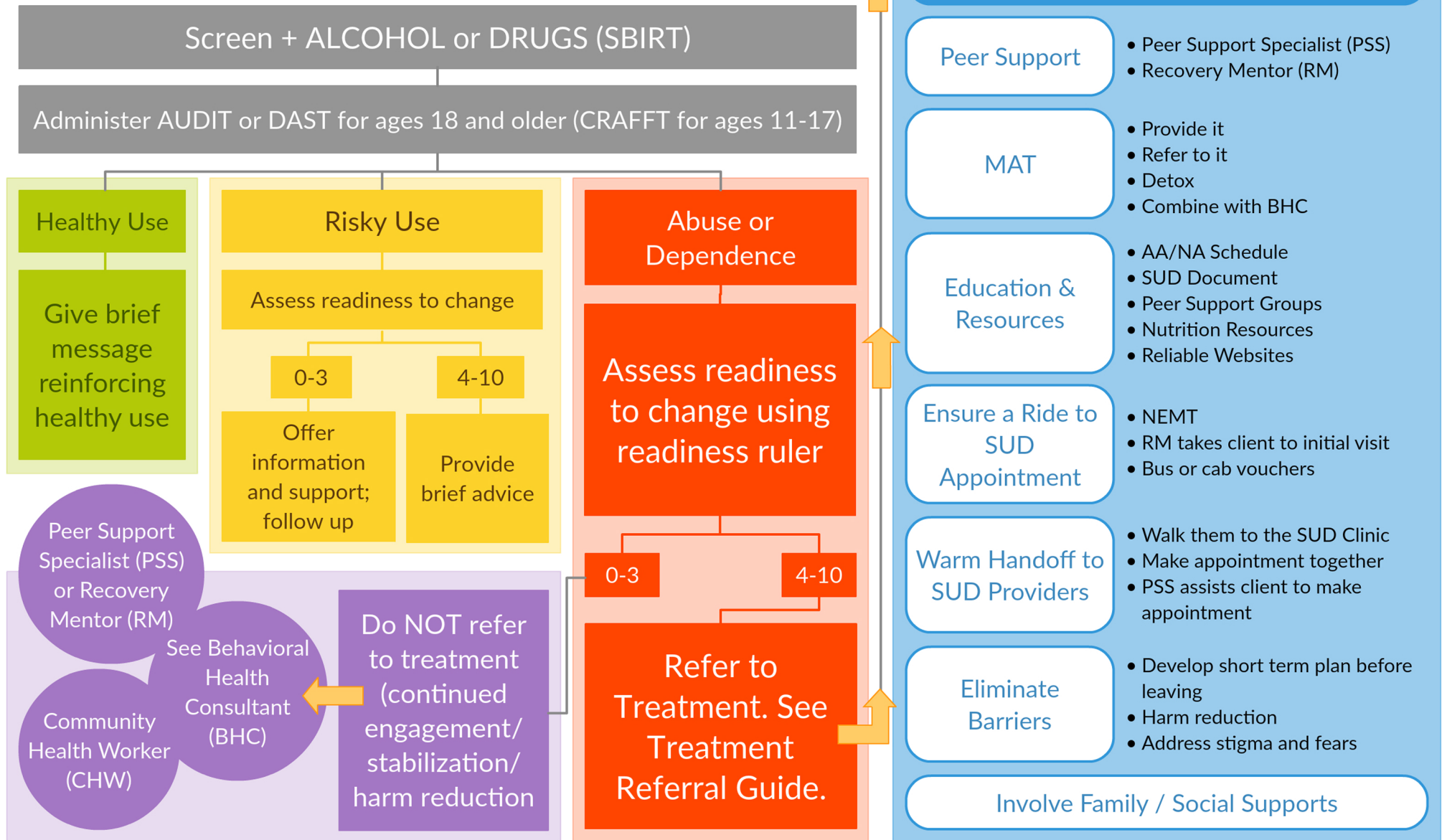


Primary Care Substance Abuse Referral Diagram



Central Oregon Resources

Treatment Resources

Bend Treatment Center	541.617.4544	bendrecovery.com
BestCare Treatment Services	541.617.7365	bestcaretreatment.org
Deschutes County Access Team	541.322.7500	deschutes.org
Lutheran Community Services	541.447.7441	lcsnw.org
New Priorities	541.923.2654	mynewpriorities.com
Pfeifer & Associates	541.383.4293	pfeiferandassociates.com
Rimrock Trails	541.447.2631	rimrocktrailsats.org
Serenity Lane	541.383.0844	serenitylane.org
Teen Challenge	541.678.5272	teenchallengetc.com

Problem Gambling

Oregon Problem Gambling Helpline 1.877.695.4648 opgr.org

Tobacco Cessation

Oregon Tobacco Quit Line 1.800.784.8669 quitnow.net
St. Charles Health System 541.706.6390 stcharleshealthcare.org

Recovery and Support Resources

Al-Anon/Alateen 541.728.3707 oregonal-anon.org
Alcoholics Anonymous 541.548.0440 coigaa.org
Celebrate Recovery 541.749.3040 centraloregoncr.org
Narcotics Anonymous 541.416.2146 centraloregonna.com

Additional Resources

Central Oregon Pain Guide
copainguide.org

SBIRT Oregon
sbirtoregon.org

Southeastern Consortium for
Substance Abuse Training
sbirtonline.org

Substance Abuse and
Mental Health Services
Administration
samhsa.gov